

## INSTALLATION GUIDE

There is nothing simpler, easier and safer than installing a vapour barrier one side of which is covered with a special self-adhesive polymer-bitumen layer. This feature allows installing vapour barrier without any additional equipment.



- Unroll the membrane, align and set it into position along to other rolls and profiled decking.



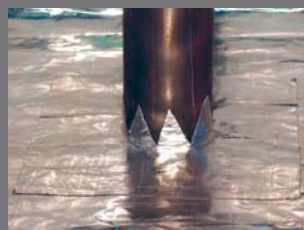
- Once aligned, peel back one end of the siliconized film.



- Press the edge to the profiled decking.



- Proceed by rolling the membrane on the decking and simultaneously pulling off the siliconized film.



- RELIABLE SEALING OF ROOF ELEMENTS



### TECHNOELAST VB 500 SELF

vapour barrier membrane  
with aluminum foil

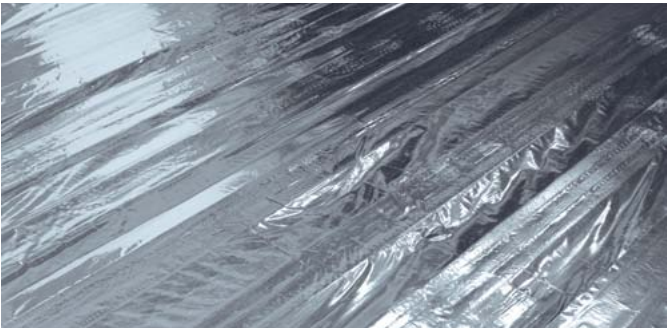


[www.technonicol.eu](http://www.technonicol.eu)  
[info@technonicol.eu](mailto:info@technonicol.eu)

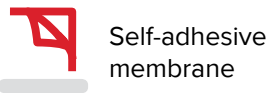
**TECHNOELAST VB 500 SELF**

KNOWLEDGE. EXPERIENCE. CRAFTSMANSHIP.

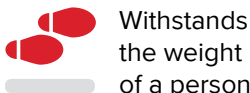
## DESCRIPTION



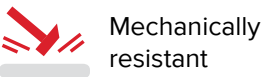
Vapour barrier consists of bitumen membrane covered with aluminium foil. This membrane is intended for application on the metal profiled decking as the vapour barrier layer of the roofing system. Suitable for application in roofing systems of civil and industrial buildings with normal and increased temperature and moisture regime (factories, gyms, pools).



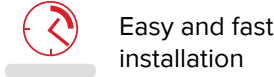
Self-adhesive membrane



Withstands the weight of a person



Mechanically resistant



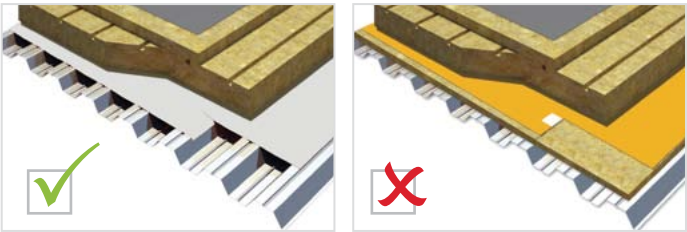
Easy and fast installation

High tensile strength allows withstanding the weight of a person standing on the membrane located between waves of the profiled decking. This membrane, unlike any other PE vapour insulation films, does not tear or stretch.

## TECHNICAL DATA

MAIN CHARACTERISTICS	VALUE
Weight, kg/m <sup>2</sup>	0.5
Thickness, mm	0.5
Reinforcement	fiber-glass
Max. tensile force, N/50 mm	600/600±20%
Water-vapour permeability properties Sd, m	> 1500
Flow resistance, °C	≥ +90
Flexibility, °C	≤ -25
Length x Width, m	50×1.08

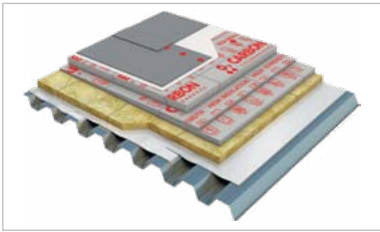
## ADVANTAGES



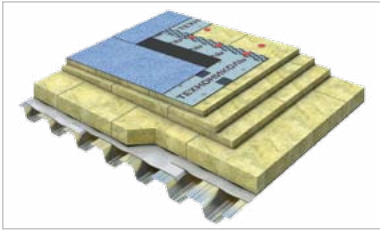
Features and benefits of TECHNOELAST VB 500 SELF:

- 1. High productivity**
  - No need to install an additional solid layer for vapour barrier.
  - No need to use double sided tape for sealing seams.
  - Fewer stages of installation.
- 2. Easier way to install a perfect vapour barrier**
  - Adhesive surface allows perfect bonding of the membrane seams.
  - Protects the profiled decking from precipitation.
- 3. Lower costs**
  - No additional layer of stone wool is needed.
  - No scraps of thermal insulation.
  - No additional sealing of seams.
  - Reduced labour costs.
- 4. Water-vapour permeability Sd > 1500 m**
  - Can be used for roofing systems with bitumen or synthetic membranes.
  - Suitable for use above premises with high moisture content.
  - Minimizes the risk of condensation.
- 5. Mechanically resistant**
  - The surface can be walked on during installation of thermal insulation.

## USE

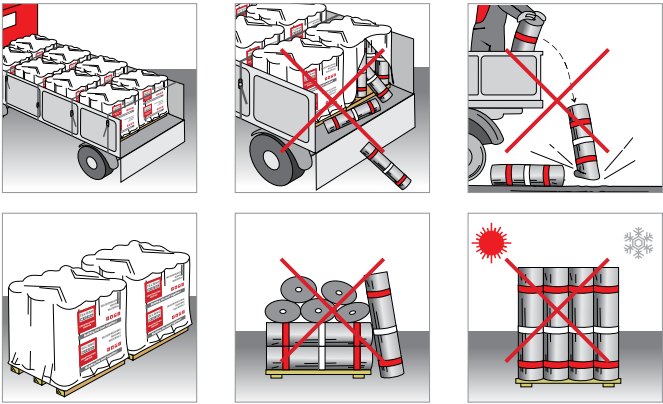


Flat roof structure with LOGICROOF PVC membrane.



Flat roof structure with bitumen membrane.

## TRANSPORTATION | STORAGE



- Rolls shall be transported on pallets in a vertical position.
- Avoid damaging the protective film during loading.
- During transportation pallets must be secured with straps.
- Do not throw rolls when loading and unloading.
- Rolls must be placed on a pallet in one row. Rolls must be protected from moisture and direct sunlight.
- Rolls must be stored at least 1 meter away from sources of heat.