

Single Ply Membrane Details

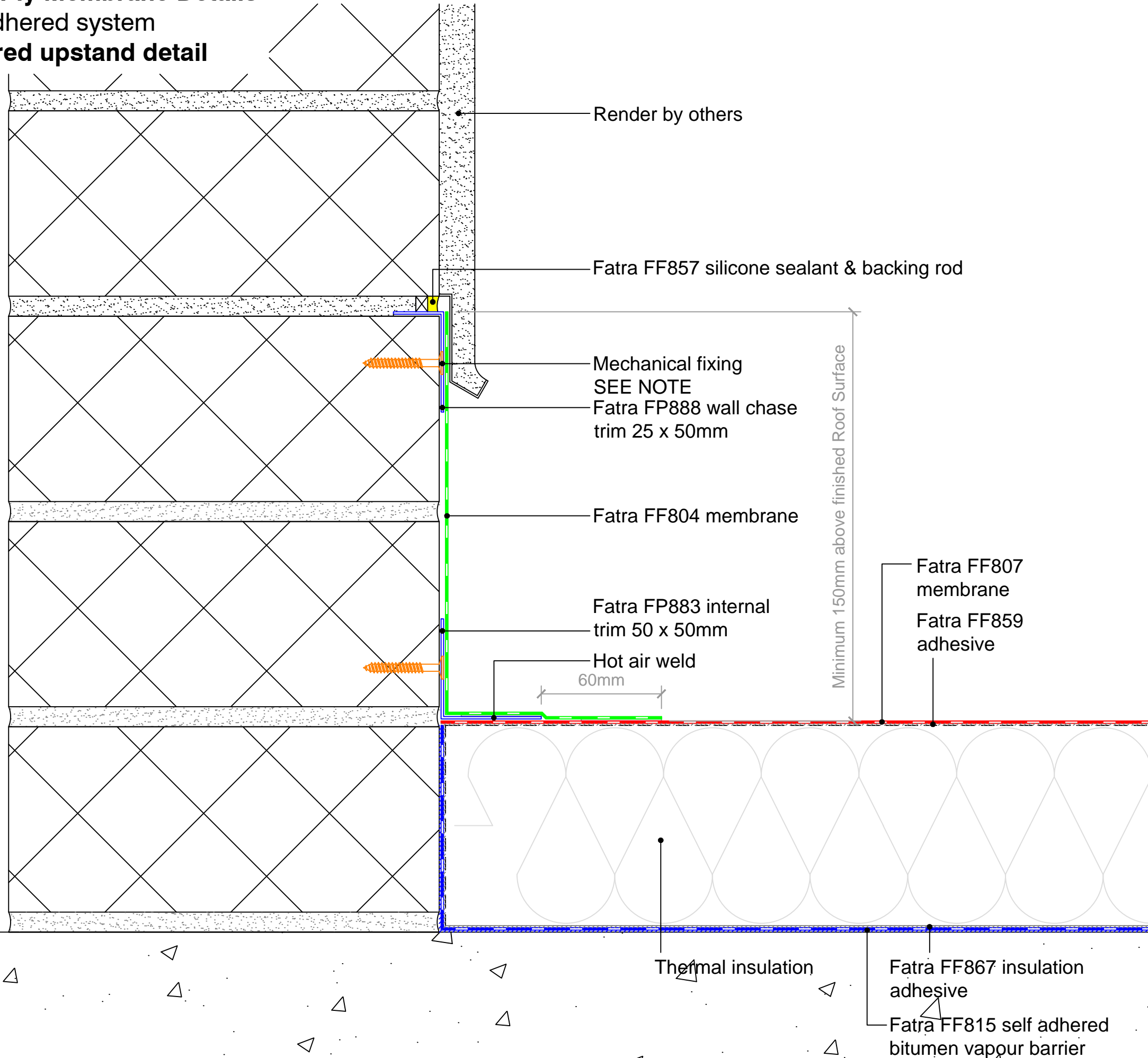
Fully adhered system

Rendered upstand detail

MECHANICAL FIXINGS:-

Selection of fixings:-
 Deck - Metal/Timber/plywood
 FBS-5.8 fasteners
 Metal deck 15mm penetration to underside
 Timber deck 12mm penetration to underside

Deck - Concrete
 FHD-6.1 fasteners
 Concrete deck 25mm embedment



Render by others

Fatra FF857 silicone sealant & backing rod

Mechanical fixing
 SEE NOTE
 Fatra FP888 wall chase
 trim 25 x 50mm

Fatra FF804 membrane

Fatra FP883 internal
 trim 50 x 50mm

Hot air weld
 60mm

Minimum 150mm above finished Roof Surface

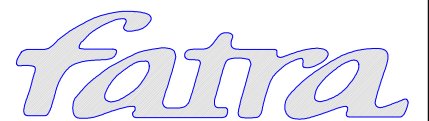
Fatra FF807
 membrane
 Fatra FF859
 adhesive

Thermal insulation

Fatra FF867 insulation
 adhesive

Fatra FF815 self adhered
 bitumen vapour barrier

FATRA UK LTD.
 UNIT 12
 THE TIMBER YARD
 EAST MOORS ROAD
 OCEAN PARK
 CARDIFF, CF24 5EE



T 029 2048 7954
 F 029 2048 9226

E technical@fatra.co.uk
 W www.fatra.co.uk

Single Ply Membrane Details FULLY ADHERED SYSTEM RENDERED UPSTAND DETAIL

DATE:
JANUARY 2018

SCALE:
1:2 @ A3

DRAWN:
LB

DRAWING NO:
FATRA FA-15

REVISION:
 -