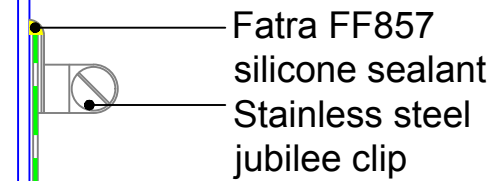
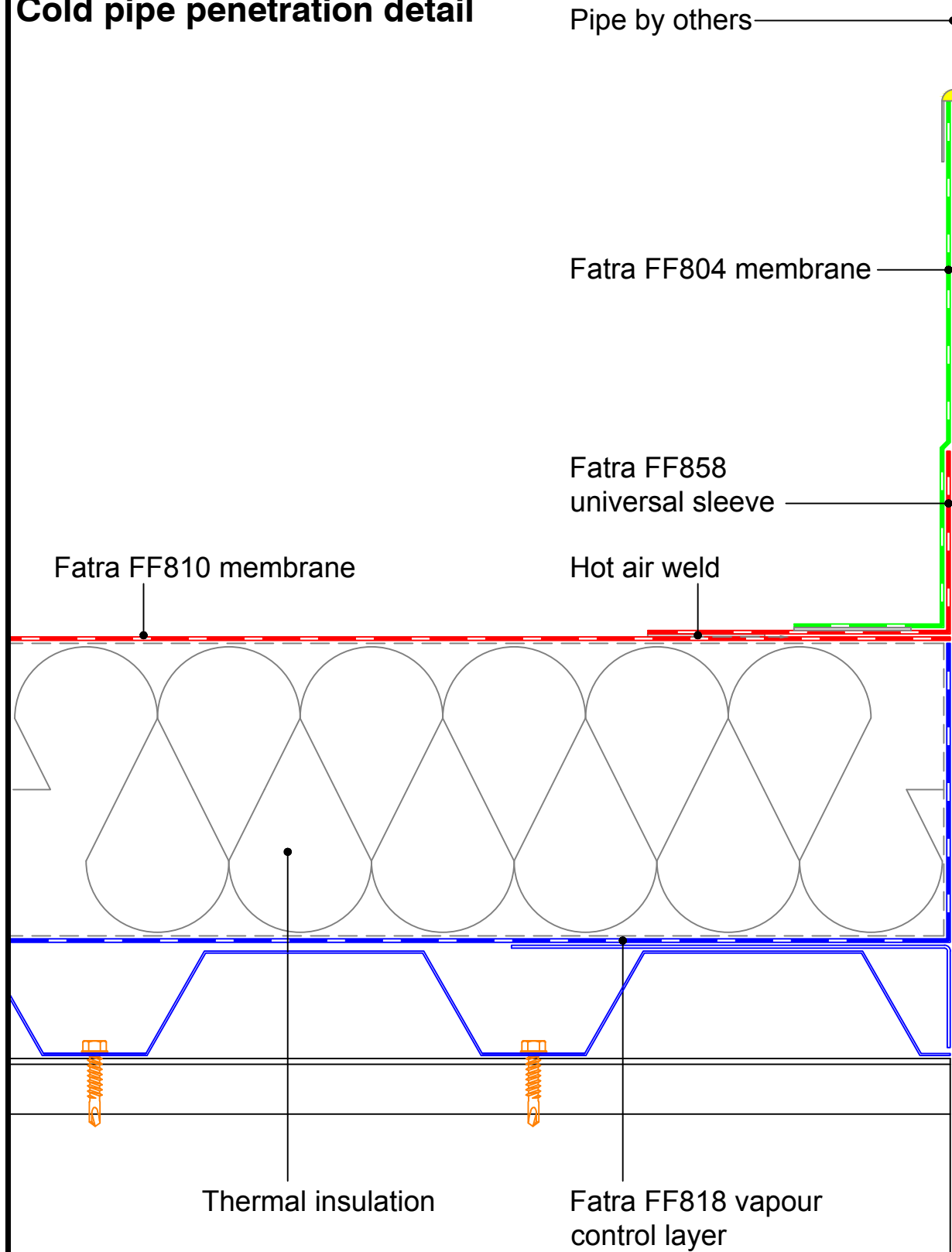


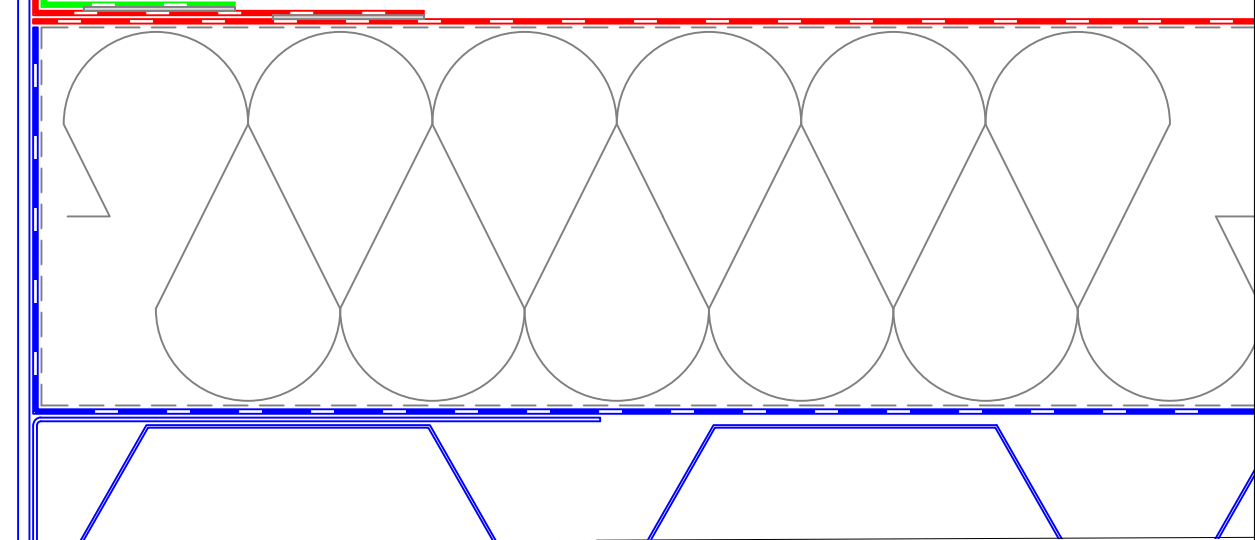
Single Ply Membrane Details
Mechanically Fixed System
Cold pipe penetration detail



MECHANICAL FIXINGS:-

Selection of fixings:-
 Deck - Metal/Timber/plywood
 FBS-5.8 fasteners
 Metal deck 15mm penetration to underside
 Timber deck 12mm penetration to underside

Deck - Concrete
 FHD-6.1 fasteners
 Concrete deck 25mm embedment



FATRA UK LTD.
 UNIT 12
 THE TIMBER YARD
 EAST MOORS ROAD
 OCEAN PARK
 CARDIFF, CF24 5EE

fatra

T 029 2048 7954 E technical@fatra.co.uk
 F 029 2048 9226 W www.fatra.co.uk

Single Ply Membrane Details
MECHANICALLY FIXED SYSTEM
COLD PIPE PENETRATION DETAIL

| | | |
|-----------------------------------|---------------------------|-----------------------|
| DATE: JANUARY 2018 | SCALE: 1:2 @ A3 | DRAWN: LB |
| DRAWING NO: FATRA MF-30 | | REVISION: - |