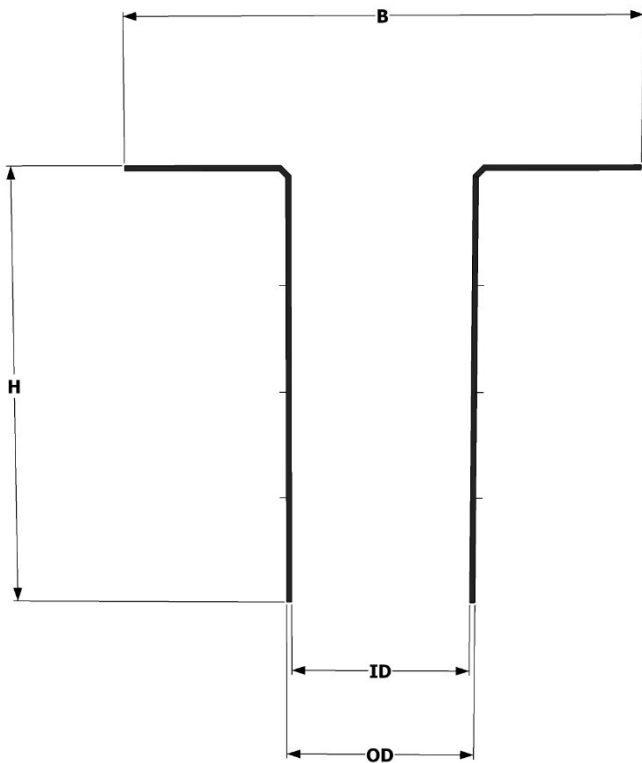


PVC – P Vertical Outlets

PVC-P Vertical Outlets are supplied in a range of sizes to suit the various pipe sizes most commonly used in drainage. These outlets are made from a soft flexible PVC which means they are extremely easy to install. The materials used are UV stabilised and are resistant to ozone and other atmospheric chemicals. The spigot is 250mm long and can be got in the longer length of 400mm if required. The spigot also has ribs applied which act as an anti-back up aid by making sure the outlet fits snugly into the onsite drainage system.

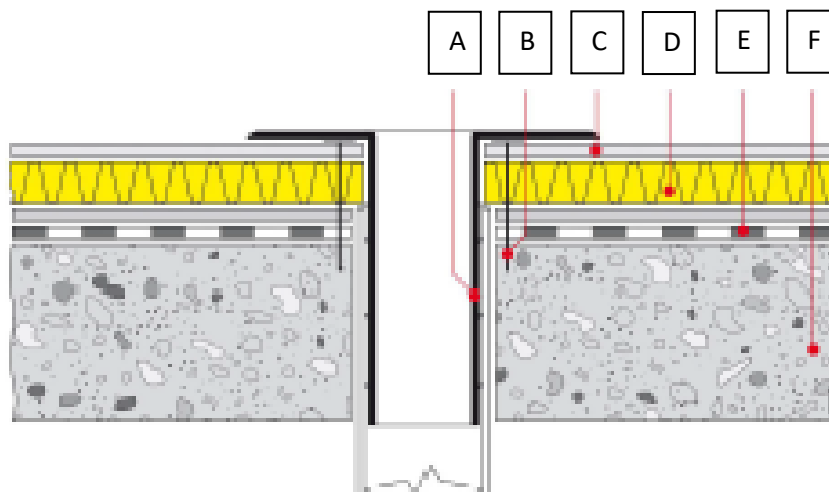


Description	VOPVC060	VOPVC075	VOPVC100	VOPVC110	VOPVC160
Size	60mm	75mm	100mm	110mm	160mm
B	250mm	295mm	295mm	335mm	385mm
H	250mm	250mm	250mm	250mm	250mm
ID	54mm	66mm	92mm	100mm	148mm
OD	60mm	75mm	100mm	110mm	160mm
Available in RAL7016 & RAL7035					

Installation

1. Install the PVC-P membrane to the substrate, cutting a hole in correspondence to the drainage pipe.
2. Mechanically fix the membrane to the substrate around the perimeter of the of the downspout (approx 3 fixings).
3. Make sure that the welding surfaces are clean and free from any contaminants.
4. Insert the roof drain into the downspout.
5. Hot air weld the underside of the flange to the waterproofing membrane with the appropriate hot air welding equipment.
6. Check the finished weld with a probing tool, this operation must only be carried out after the weld has cooled completely.
7. Insert a leaf guard or gravel grate whichever is appropriate.

NOTE: In those cases where the roof drain is installed below the waterproofing membrane, the flange must be fixed to the substrate (approx 4 fixings) around the outside perimeter



A – Outlet with Anti-backup

B - Mechanically fix

C - Layer of PVC-P membrane D - Insulation

E - Vapour barrier

F - Deck