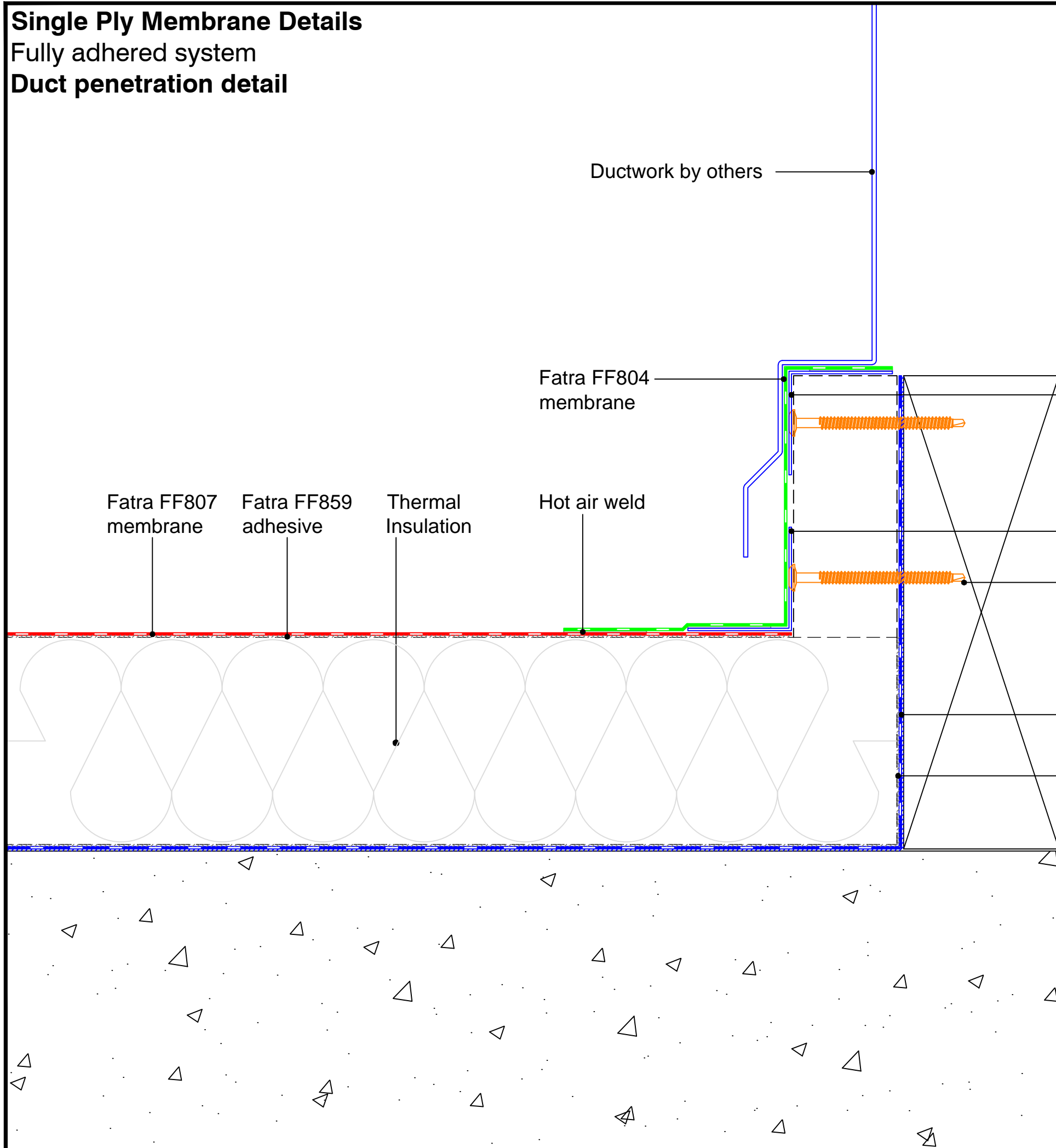


# Single Ply Membrane Details

Fully adhered system

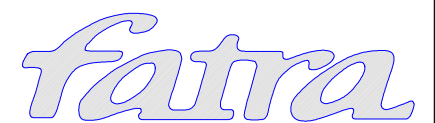
## Duct penetration detail



### MECHANICAL FIXINGS:-

- Selection of fixings:-  
 Deck - Metal/Timber/plywood  
 FBS-5.8 fasteners  
 Metal deck 15mm penetration to underside  
 Timber deck 12mm penetration to underside
- Deck - Concrete  
 FHD-6.1 fasteners  
 Concrete deck 25mm embedment

FATRA UK LTD.  
 UNIT 12  
 THE TIMBER YARD  
 EAST MOORS ROAD  
 OCEAN PARK  
 CARDIFF, CF24 5EE



T 029 2048 7954      E technical@fatra.co.uk  
 F 029 2048 9226      W www.fatra.co.uk

Single Ply Membrane Details  
**FULLY ADHERED SYSTEM**  
**DUCT PENETRATION DETAIL**

DATE: <b>JANUARY 2018</b>	SCALE: <b>1:2 @ A3</b>	DRAWN: <b>LB</b>
DRAWING NO: <b>FATRA FA-47</b>		REVISION: -