

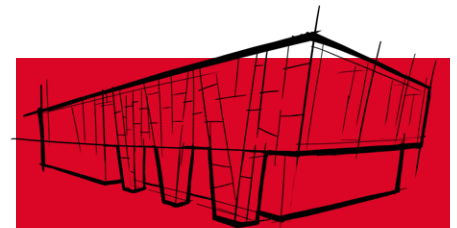


Acoustic Membrane

High performance sound-deadening

ROCKWOOL Acoustic Membrane is a flexible, high-density polymer mass layer. The product, when combined with ROCKWOOL insulation products, offers both high performing and economic acoustic solutions for flat roofing and built-up metal roofing systems. An ideal acoustic solution for buildings requiring high levels of acoustic performance.

- Excellent acoustic properties
- Easy to cut and install on site
- Supplied as a roll which creates fewer joints during installation
- A high density mass layer on a roll, offers a cost-effective solution
- Suitable for new build and refurbishments



ROCKWOOL Acoustic Membrane is a high-density polymer designed to reduce sound transfer through a flat roof build-up by adding to its mass.

An ideal acoustic solution for buildings requiring high levels of acoustic performance, such as cinemas, live music venues, airports, schools, and hospitals, to name but a few.

Acoustic Membrane



APPLICATIONS

ROCKWOOL Acoustic Membrane is designed to enhance the acoustic performance of flat roof constructions in conjunction with Hardrock Multi-Fix insulation.

PERFORMANCE

Several airborne and rain noise acoustic tests have been carried out on various roof constructions incorporating ROCKWOOL Acoustic Membrane and HardRock® Multi-Fix. The results from these test programmes have allowed for accurate assessment of intermediate performances. For more information please contact Technical Solutions on 01656 868 490.

Acoustic Membrane

PRODUCT INFORMATION

Dimensions

Area weight (kg/m ²)	Length (mm)	Width (mm)	Thickness (mm)
5	6050	1220	2.5
10	4000	1200	5.0

Density

Approximately 2,000kg/m³.

Product properties

Characteristic	Test	Value
Pliability	UEAtc	Does not break when bending at -20°C
Tensile strength	UNE 104-281/6.6	≥ 150 x 150 N/50mm
Elongation	UNE 104-281/6.6	≥ 200 x 200%
Compressive strength	-	4.54kg/cm ²
Water vapour resistance factor	UNU EN 1931	μ ≥ 4.15x10 ⁴

Handling

The 5kg/m² and 10kg/m² rolls weigh approximately 37kg and 47kg respectively.

Weather protection

All products are wrapped in polythene for short-term protection, if stored outside. For longer-term protection, the product should be stored in dry premises, protected against weathering, and must not be exposed to temperatures exceeding 35°C.

For safety, pallets should not be stacked.

INSTALLATION

ROCKWOOL Acoustic Membrane should be laid directly onto the metal decking, across the line of the profiles. The metal decking must be clean and dry.

Align the membrane and extend the roll over the metal decking progressively.

Please note that it is not necessary to remove the protective plastic film.

All membrane joints should be overlapped by a minimum of 50mm as small openings can reduce the level of acoustic insulation achieved.

Where required, ROCKWOOL Acoustic Membrane is easily cut or shaped with a sharp knife.

Coverage

For a 35mm deep profiled metal deck, each square metre of ROCKWOOL Acoustic Membrane will cover approximately 0.95m² of surface area including overlaps. Coverage may vary for other profile types.

Acoustic Membrane

BUILDING SAFETY AND PRODUCT USE

LEGAL NOTICES

General safety requirements – Building Safety Act 2022

ROCKWOOL Limited is committed to supporting specifiers, resellers and users of ROCKWOOL products for the full life cycle of the product to comply with the obligations and responsibilities set out in the Building Safety Act 2022. With regard to the general safety requirements of the Act, ROCKWOOL Limited cannot control or foresee every situation where its products might be used. We therefore strongly advise that specifiers, resellers and users contact us where use of ROCKWOOL products is contemplated in applications different from those explicitly described in the latest, relevant ROCKWOOL product datasheets; especially in applications that can be reasonably foreseen as critical to safety.

ROCKWOOL Limited reserves the right to amend the specification of its products without notice. Changes to the ROCKWOOL manufacturing process, or to pertinent regulations, may be reflected in changes to tested and certified product performance. Whilst ROCKWOOL Limited endeavours to keep its publications up to date, readers will appreciate that between publications there may be pertinent changes in the law or other developments affecting the accuracy of the information contained in our publications.

ROCKWOOL Limited does not accept responsibility for the consequences of using (including testing or certifying) its products in applications different from those explicitly described in the relevant ROCKWOOL product datasheets. Expert advice should be sought, and ROCKWOOL Limited should be contacted, where such different use is contemplated, or where the extent of any use described by ROCKWOOL Limited is in doubt.

The ROCKWOOL Trademark

ROCKWOOL® - our trademark

The ROCKWOOL trademark was initially registered in Denmark as a logo mark back in 1936. In 1937, it was accompanied with a word mark registration; a registration which is now extended to more than 60 countries around the world.

The ROCKWOOL trademark is one of the most important assets of the ROCKWOOL Group, and is therefore well-protected and defended by ROCKWOOL throughout the world.

If you require permission to use the ROCKWOOL logo for your business, advertising or promotion, you must apply for a Trade Mark Usage Agreement.

To apply, write to:
marketcom@rockwool.com

Trademarks

Registered trademarks of the ROCKWOOL Group include but are not limited to:

ROCKWOOL®, RockClose®, RainScreen Duo Slab®, HardRock®, RockFloor®, Flexi®, RockFall®, FirePro®, DuctRock®, BeamClad®, NyRock®

© ROCKWOOL 2023.
All rights reserved.

Photography and illustrations

The product illustrations are the property of ROCKWOOL Limited and have been created for indicative purposes only.

Unless indicated below, the photography and illustrations used in this guide are the property of ROCKWOOL Limited. We reserve all rights to the usage of these images.

If you require permission to use ROCKWOOL images, you must apply for a Usage Agreement.

To apply, write to:
marketcom@rockwool.com

Acoustic Membrane

ROCKWOOL stone wool - safe to install and live alongside

There are no hazardous classifications associated with stone wool insulation manufactured by ROCKWOOL-UK according to EU REACH and UK REACH regulations on health and the environment.

ROCKWOOL safe use instruction sheets and material safety data sheets (where applicable) can be downloaded [here](#).



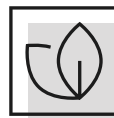
Sustainability

ROCKWOOL products are used to enrich modern living, creating safer, healthier and more climate-resilient communities.

We transform abundant, natural volcanic rock into stone wool insulation products that are used to reduce energy demand, lower fuel bills and help address society's climate change challenges.

ROCKWOOL stone wool insulation is recyclable and can be transformed into new ROCKWOOL products. Please contact us for details of how we can work together to recycle waste ROCKWOOL stone wool material that may be generated during on-site installation.

Our annual sustainability reports, which set out progress against our sustainability goals, and further details of the positive impacts of using our products can be found on our website.



Environment

ROCKWOOL takes a fact-based, auditable approach to documenting our progress in maximising our products' positive impact and minimising the effect our operations have on the environment, backed by third-party references and methodologies. Further details can be found online in our annual sustainability report.

Our high-tech production process uses filters, pre-heaters, after-burners and other cleaning and collection systems that help to reduce the effects of our manufacturing operations on the environment.

ROCKWOOL stone wool insulation does not contain (and has never contained) gases that have ozone depletion potential (ODP) or global warming potential (GWP).

