

Notes

Substrate Preparation

i. The substrate is to be prepared in accordance with current instructions and should comply with all current standards. Where a BMI Icopal project specification has been provided these drawings should be considered as part of the project specification and together these take precedence over other instructions. Please consult BMI Technical Department for detailed guidance or queries.

Construction Notes

i. This drawing is intended to demonstrate the recommended detailing of BMI Icopal waterproofing membranes and systems.

ii. Building details shown are intended to be an indication of typical construction only and may vary to actual site and project conditions. Please refer to the principal designer for project details in this regard.

Additional Notes

i. For roofing product references please see BMI Icopal specification where applicable.

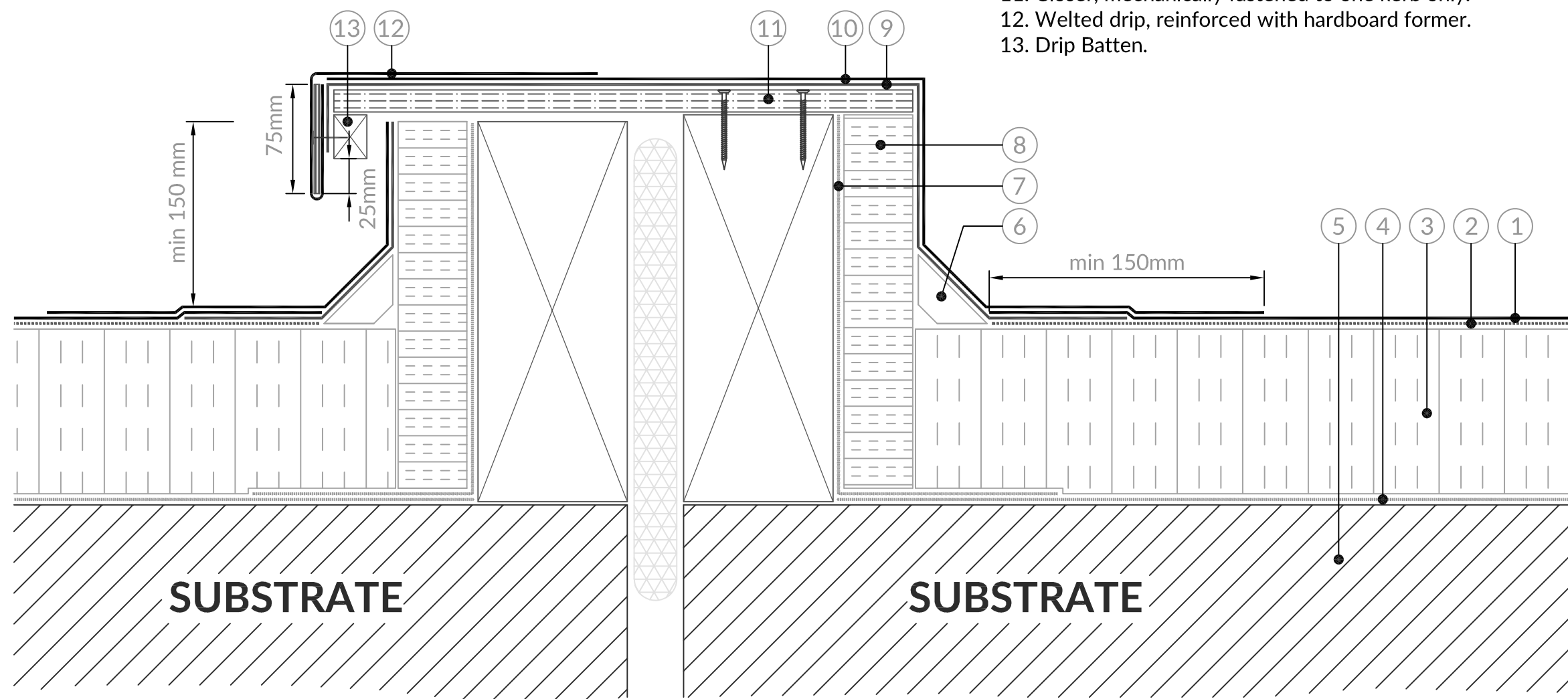
ii. Continuity of waterproof covering must be maintained for a minimum vertical height of 150mm above finished roof level, in accordance with the current version of BS:6229, BS:8217 and BS:5250.

iii. Upstands (for reinforced bitumen) of more than 250mm high should be regarded as vertical work, and it will be necessary to mechanically fasten the membrane at the top edge, in accordance with the current version of BS8217. Upstands for single ply and liquid membranes must be terminated as per the BMI Icopal instructions.

iv. BMI Group UK Limited provides this indicative detail in good faith and takes no responsibility for the sufficiency or otherwise of the drawing.

Notes:

1. BMI Icopal reinforced bitumen mineral capsheet.
2. BMI Icopal reinforced bitumen underlay.
3. Thermazone insulation, as specification.
4. BMI Icopal vapour control layer, as specification.
5. Substrate, prepared in accordance with current instructions.
6. Thermazone angle fillet, as specification.
7. BMI Icopal Vapour control layer, at details; as specification.
8. Thermazone Insulation, to upstand; as specification.
9. BMI Icopal reinforced bitumen underlay, at details.
10. BMI Icopal reinforced bitumen mineral capsheet, at details.
11. Closer, mechanically fastened to one kerb only.
12. Welded drip, reinforced with hardboard former.
13. Drip Batten.



BMI Group UK Limited
bmigroup.com/uk
 T: +44 (0) 330 123 4585
 E: technical.uk@bmigroup.com

Drawing Title:	Warm Roof To Twin Kerb Expansion Joint				
System:	Reinforced Bitumen Membranes - Two Layer System				
Dwg. No:	T-W-12-101	Date:	21/06/2022	Scale	NTS

This drawing has been prepared for general information purposes only. This details drawing is to recommend the correct procedure for installing BMI products. All other building details are indicative and are not to be used for building construction. (Do not scale- use figured dimensions only)

© This drawing and the design therein is the exclusive property of BMI Group UK Limited. It should not be copied or reproduced without consent and shall only be used in reference to materials or goods supplied by them.