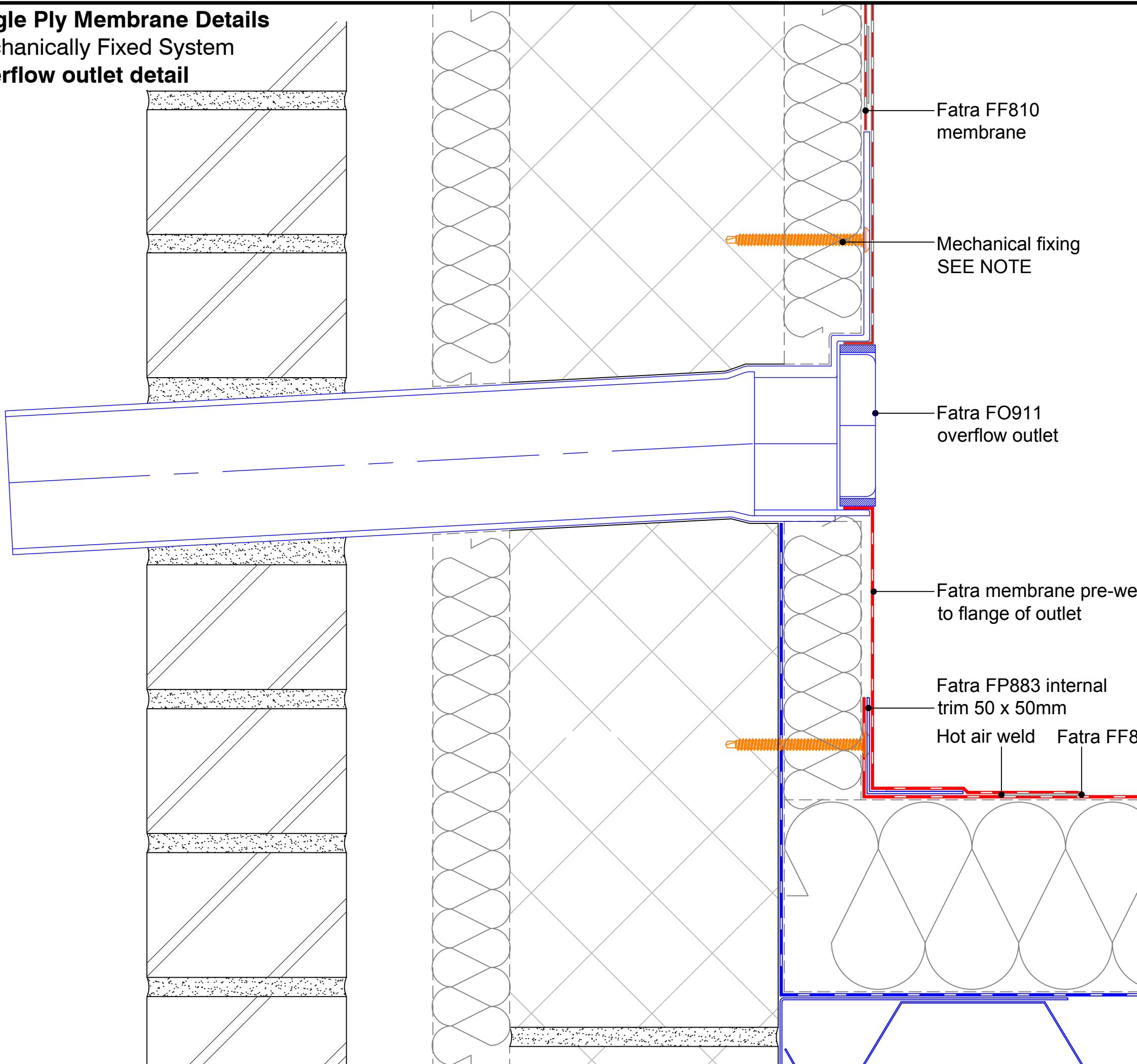


Single Ply Membrane Details
Mechanically Fixed System
Overflow outlet detail



MECHANICAL FIXINGS:-

Selection of fixings:-
 Deck - Metal/Timber/plywood
 FBS-5.8 fasteners
 Metal deck 15mm penetration to underside
 Timber deck 12mm penetration to underside

Deck - Concrete
 FHD-6.1 fasteners
 Concrete deck 25mm embedment

Fatra FF810
 membrane

Mechanical fixing
 SEE NOTE

Fatra FO911
 overflow outlet

Fatra membrane pre-welded
 to flange of outlet

Fatra FP883 internal
 trim 50 x 50mm

Hot air weld Fatra FF854 PVC sealant

FATRA UK LTD.
 UNIT 12
 THE TIMBER YARD
 EAST MOORS ROAD
 OCEAN PARK
 CARDIFF, CF24 5EE

fatra

T 029 2048 7954 E technical@fatra.co.uk
 F 029 2048 9226 W www.fatra.co.uk

Single Ply Membrane Details
MECHANICALLY FIXED SYSTEM
OVERFLOW OUTLET DETAIL

DATE: JANUARY 2018	SCALE: 1:2 @ A3	DRAWN: LB
DRAWING NO: FATRA MF-28		REVISION: -